

FOR LEASE

East Wichita Industrial

1711 S. Longfellow, Wichita KS 67207

BROKERAGE
CONNECTION

InSite
REAL•ESTATE•GROUP



PROPERTY INFO

Lease Rate:	\$4.00/SF	✓ 2 Drive-In Overhead Doors (16 & 10 ft)
Lease Type:	Industrial Gross	✓ 18 ft. Ceiling Height
Zoning:	Limited Industrial	✓ 3-Phase Electric
Available Space:	13,500 SF	✓ Located only 1 mile from Kellogg (US-54)
		✓ All Utilities Included
		✓ 3 Offices and Restroom

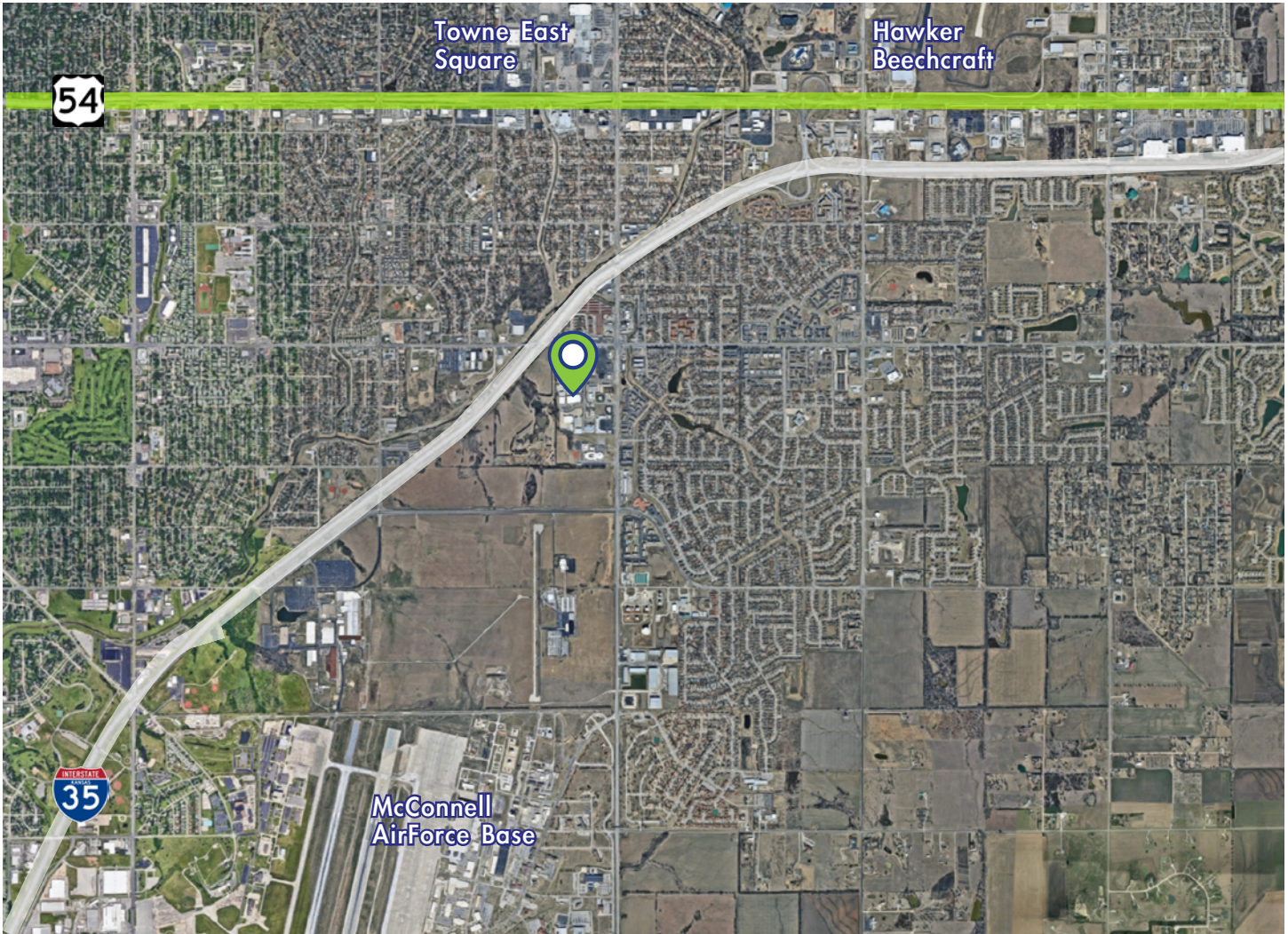
FOR LEASE

East Wichita Industrial

1711 S. Longfellow, Wichita KS 67207

BROKERAGE
CONNECTION

InSite
REAL•ESTATE•GROUP



AREA INFO

Area Neighbors:

McConnell AirForce Base, Hawker Beechcraft, Towne East Square